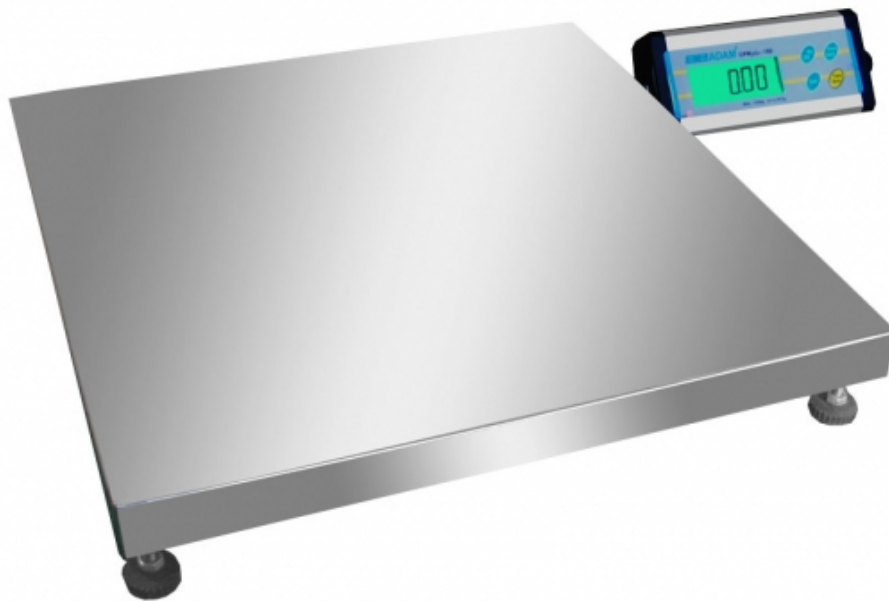
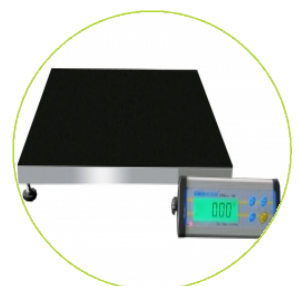
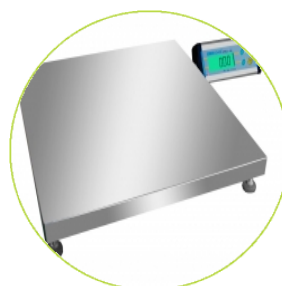
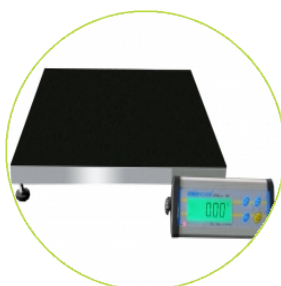
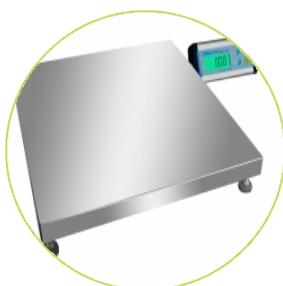


# CPWplus M Weighing Scales



## Speed, Performance, Value - Perfect Balance

- Hold function
- Full range tare
- Zero Tracking
- Large backlit LCD display
- Colour coded, sealed keypad
- Four load cell construction
- Wall mount bracket
- Large stainless steel platform
- Modern low profile design
- Splashproof to protect from accidental spills
- Simple 4 button operation
- Non-slip adjustable levelling feet
- RS-232 bi-directional interface
- External calibration
- Rechargeable battery
- Auto sleep / power down function to save battery life
- Low battery indication
- DC Adapter
- Animal / dynamic weighing
- Weighing



[www.adamequipment.com](http://www.adamequipment.com)

## Technical Specifications

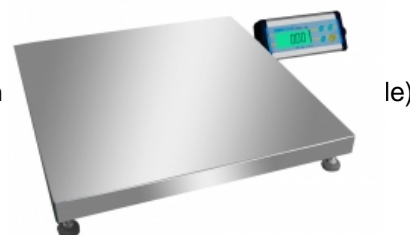
Model	CPWplus 35M	CPWplus 75M	CPWplus 150M	CPWplus 200M
Maximum capacity	75lb/35kg	165lb/75kg	330lb/150kg	440lb/200kg
Readability	0.02lb/10g	0.05lb/20g	0.1lb/50g	0.1lb/50g
Tare range	Full	Full	Full	Full
Repeatability (S.D.)	10g	20g	50g	50g
Linearity ( $\pm$ )	20g	40g	100g	100g
Platform size	19.7 x 19.7" / 500 x 500mm			
Net weight	19.6lb		-	19.6lb

## General Specifications

Units of measurement	Kilogram (kg), Pound (lb), Ounce (Oz), Pound-Ounce (lb-oz)
Typical stabilisation time	2-3 Sec
Interface	RS-232 bi-directional Interface
Calibration	Automatic External with user selectable calibration mass
Display	LCD with minimum 22mm digits with weight legends for kg, lb, oz and low battery, stable, zero, net weight and hold symbols, as well as ability to display lb and oz together
Operating temperature	32°F - 104°F
Housing	Indicator- Aluminium, Platform- Mild Steel base and stainless steel platform
Overall dimensions (wxdxh)	19.7 x 19.7 x 1.6" / 500 x 500 x 40mm
Dimensions notes	Indicator: 220 x 95 x 43mm (w x d x h)

## Key Accessories

- Adam DU - Data Collection Program
- RS-232 to USB Interface Cable (must be ordered in conjunction
- RS-232 to PC Cable
- ATP Thermal Printer
- Thermal Paper For Adam ATP (10 pack)



Adam Equipment - offices worldwide

[www.adamequipment.com](http://www.adamequipment.com)